



**WISCONSIN NURSES ASSOCIATION
ADVANCED PRACTICE REGISTERED NURSE FORUM**

27TH ANNUAL PHARMACOLOGY & CLINICAL UPDATE

**THURSDAY, MAY 2–SATURDAY, MAY 4, 2013
MONONA TERRACE AND CONVENTION CENTER, MADISON**

27TH ANNUAL PHARMACOLOGY & CLINICAL UPDATE

WHO WE ARE

The WNA Advanced Practice Registered Nurse (APRN) Forum is a mutual interest group of the Wisconsin Nurses Association that advocates for Nurse Practitioners, Clinical Nurse Specialists, Certified Nurse Midwives, and Certified Registered Nurse Anesthetists. Areas of focus include:

- Educating employers and consumers about the role of the Advanced Practice Registered Nurse
- Ensuring that all APRNs can practice to the fullest extent of their scope of practice
- Monitoring practice regulations (such as the protection of title and autonomy)
- Watching billing/access issues (such as reimbursement by all insurance companies)
- Keeping an eye on legislative issues, pursuing legislation through the lobbying power of WNA (such as an APRN Modernization Act)
- Developing educational programs

The WNA APRN Forum is your professional voice and is here to assist you and your practice. Please feel free to contact us via the WNA website www.wisconsinnurses.org, email info@wisconsinnurses.org, or by calling (800) 362-3959.

PURPOSE

This intensive three-day conference will review current and identify new pharmacological and clinical approaches to management of common conditions in primary and acute care with the goal of safe prescribing practice and optimal therapeutic outcomes.

INTENDED AUDIENCE

This conference has been designed for nurse practitioners, clinical nurse specialists, nurse midwives, physician assistants, advanced practice registered nurse students, and other health professionals in primary care.

CONTINUING NURSING EDUCATION CREDIT

This year's conference offers over 70 contact hours of challenging pharmacology and clinical updates and skill-enhancing workshops. Those sessions offering **pharmacology credits** are noted with **(Rx)** after the session title in the conference schedule. Those not marked with (Rx) do not qualify for pharmacology credits.

Participants attending the entire conference (Thursday–Saturday) can earn a total of **16.75 contact hours**.

- Thursday morning pre-conference, "The Professional Business of Being an Advanced Practice Registered Nurse," is 3.0 contact hours
- Thursday afternoon pre-conference sessions are 2.0 contact hours each
- Friday keynote presentation is 1.0 contact hour
- Friday and Saturday breakout sessions are 1.25 contact hours each

To receive credit, participants must register, attend entire session(s), and complete the online program evaluation for the overall conference and each session attended.

The WNA APRN Forum's *27th Annual Pharmacology & Clinical Update* is co-provided by the Wisconsin Nurses Association and the Wisconsin Association of Pediatric Nurse Practitioners, and has been planned in accordance with the requirements of the American Nurses Credentialing Center (ANCC) for Continuing Nursing Education.

Wisconsin Nurses Association is an approved provider of continuing nursing education by the Texas Nurses Association, an accredited approver by the American Nurses Credentialing Center's Commission on Accreditation.



The WNA APRN Forum wishes to especially thank the Wisconsin Association of Pediatric Nurse Practitioners (WAPNAP) for their efforts in planning this annual conference. WAPNAP will be holding its Annual Business Meeting on Friday, May 3, 2013, during lunch. See page 6 for more information, and be sure to indicate if you plan to attend when you register for the conference.

PLANNING COMMITTEE

Ann Baggot, MSN, WHNP-BC, APNP

Nurse Practitioner, Department of OB/GYN, UW Health/UW Medical Foundation

Cheryl Eastman, FNP-BC

Nurse Practitioner, St. Clare Hospital

Chin-Feng Dani Lai, APNP

Nurse Practitioner, Ministry Medical Group-Stevens Point

Christina Keedick, MSN, ANP-BC, APNP Adult Nurse Practitioner, Milwaukee Internal Medicine Associates

Debbie Metzler, DNP, RN, APNP, GNP-BC Associate Professor, Bellin College School of Nursing; Cardiology Nurse Practitioner, Prevea Health

Deb Krembs, MSN, APNP-C

Adult Nurse Practitioner, State of WI Bureau of Health Services - DOC

Deborah L. Schwallie, PhD, APNP-BC

Nurse Practitioner, Marquette Neighborhood Health Center

Gina Bryan, DNP, MS, APNP

Advanced Practice Registered Nurse, Journey Mental Health Center (Committee Chair)

Holly N. Hanson, APN, APNP

Nurse Practitioner, UWMF Family Medicine

Jeff Kobernusz, MS, RN, APNP, ACNP-BC Hospitalist Acute Care Nurse Practitioner - Meriter Hospital, Meriter Medical Group, Division of Hospitalist Medicine

Jo Ann Kiemen, MSN, ANP-BC

Cardiac Electrophysiology NP, Aurora Cardiovascular Services

Julie Johnson, MSN, APNP

Nursing Faculty, Nicolet Area Technical College; Provider Emergent/Urgent Care, Ministry Medical Group (WNA CNEP Nurse Planner)

Kathy Rozema, MS, RN, APNP, FNP-BC

Family Nurse Practitioner, Planned Parenthood of WI, Inc.

Laura Kwitek, BSN, MSN, APNP, WHNP-BC

OB/GYN Nurse Practitioner, UW-Health Fitchburg

Leona VandeVusse, PhD, RN, CNM, FACNM Associate Professor & Nurse-Midwifery Program Director, Marquette University

LuAnn Greiner, MS, APNP

Nurse Practitioner, UW School of Medicine and Public Health

Lynn R. Maloney, PhD, ANP-BC, GNP-BC

Nurse Practitioner, Independent Psychiatric Consultants

Maureen T. Greene, PhD, RN, APRN

Nurse Research Coordinator, Critical Care CNS, ACNP, Wheaton Franciscan-St. Joseph

Melanie Witte, MS, BC-ADM, APRN-BC

Nurse Practitioner, University of Wisconsin Medical Foundation

Nikki Campagna, DNP-BC, AOCNP

Nurse Practitioner, Cancer Treatment Centers of America - Midwestern

Pamela M. Page, APNP, FNP-BC, GNP-BC

Geriatric and Wellness Clinic APNP, Prevea Health Network

Theresa Dachel, MS, APRN, ANP-BC, GNP-BC, APNP, CEN

Nurse Practitioner-Internal Medicine, UW Medical Foundation

Rosemary A. Stetzer, MSN, RN-BC, ACHPN

Nurse Educator, Zablocki Medical Center

Mary Elizabeth S. Nelson, DNP, APNP

Nurse Practitioner, Medical College of Wisconsin

Mary Beck Metzger, MSN, APRN-BC, APNP Family Nurse Practitioner, Dean Clinic - Fort Atkinson

Sherrie Gilbert, FNP-BC, APNP

Nurse Practitioner, Marshfield Clinic - Stelton Center

Susan E. Medd, MSN, RN, CPNP, APNP

Pediatric Nurse Practitioner, NICU Developmental Follow-Up Clinic; Education Specialist, Center for Learning and Innovation - ProHealth Care

Teresa Pratlke, MSN, WHNP-BC, APNP

Education Program Coordinator, Wisconsin Nurses Association (WNA CNEP Primary Nurse Planner)

Tina Bettin, DNP, MSN, RN, FNP-BC, APNP President of WNA APRN Forum; Family Nurse Practitioner, Theda Care Physicians

REGISTRATION

Registration deadline is April 22, 2013. New this year—registration for the conference must be completed ONLINE. See page 9 for information on registration fees, how to register and pay, and our cancellation policy. Please note that registrations will not be processed until payment is received; therefore, we strongly encourage paying with a credit card at the time of online registration. Should you encounter any issues registering for the conference, please contact Brenda, WNA Conference Registration Coordinator, at 800-362-3959, ext. 12 or Brenda@wisconsinnurses.org.

A NOTE ABOUT PRE-CONFERENCE REGISTRATION

Priority will be given to practicing APRNs for the *enrollment-limited* afternoon sessions of the Pre-Conference. If you are registering as a student and wish to be on the waiting list for any of the *enrollment-limited* sessions, please contact Brenda at the WNA office (608-221-0383, ext. 12; 800-362-3959, ext. 12; or brenda@wisconsinnurses.org). You will be notified by email on Friday, April 12 if we have space in the session. You will have one week to confirm your seat. If no response is received by Friday, April 19 your space will be given to another participant. Please contact the WNA office with questions.

“KEEPING IT GREEN”

All handouts and reference materials provided by presenters will be posted on the WNA website—no hardcopies will be available at the conference. Registered participants will receive an email containing a link and directions for accessing the handouts about two weeks prior to the conference.

ELECTIONS, SCHOLARSHIPS AND SILENT AUCTION

ELECTIONS: WNA members ... Be sure to vote in the WNA APRN Forum elections. Ballot will be sent electronically in early May.

SCHOLARSHIPS: The winners of the Mary Barker APRN Forum Scholarship for nursing graduate school students will be announced at lunch on Friday, May 3. Please join us in congratulating them!

Jonathan Beck, CCRN, BLS, ACLS

Kathleen Morris, RN, MSN, FNP-C

Hope Orvold, RN, BSN

Caitlin Shannon, RN, BSN

The scholarship is named after Mary Barker, honoring one of Wisconsin's pioneer nurse practitioners and leaders. Four \$2,000 scholarships were awarded to WNA members who are students in good standing at one of Wisconsin's 12 nursing graduate schools preparing candidates to practice as APRNs for the 2013–2014 academic year. Application deadline for next year is March 1.

SILENT AUCTION: The WNA APRN Forum will be holding a silent auction, in conjunction with the buffet dinner and entertainment by the *Laryngospasms* on Friday, May 3, to raise money for education and research scholarships. If you are interested in donating an item, please send a description and value of the item to joe@wisconsinnurses.org. Items donated are tax-deductible.

LOCATION, DIRECTIONS, ACCOMMODATIONS AND PARKING

The Monona Terrace Community and Convention Center is located at 1 John Nolen Drive, Madison, WI 53703. For driving directions to the Monona Terrace, go to www.mononaterrace.com and click on “Getting Here” at the top of the page.

Blocks of rooms are reserved at [four area hotels](#) for the conference: Hilton Madison Monona Terrace, Sheraton Madison Hotel, Best Western Inn on the Park, and The Madison Concourse Hotel. All have different price points and amenities. The reservation deadline for all four hotels is early April, so please make your reservation right away to take advantage of the discounted rate! Rooms requested after the reservation deadline, or after the room blocks are full, will be made on a space-available basis at the non-conference rate. Should you encounter any issues when making a room reservation for the conference, please contact Brenda, WNA Conference Registration Coordinator, at 800-362-3959, ext. 12 or Brenda@wisconsinnurses.org.

Parking for the conference is available at the Monona Terrace and in surrounding city parking ramps. [View the map](#) for ramp locations.

CONFERENCE SCHEDULE

THURSDAY, MAY 2, 2013

8:00 a.m.–12:00 p.m.

MORNING PRE-CONFERENCE

“The Professional Business of Being an Advanced Practice Registered Nurse”

8:00–8:45 a.m.

Pre-Conference Registration

8:45–9:00 a.m.

Welcome and Introductions

9:00–10:00 a.m.

Meaningful Use – We’re Not Done Yet

Jocelyn Hanson, MA - *Health Information Technology*

Pro – *Implementation Manager, WHITEC - a division of MetaStar*

This session will discuss the second phase of Meaningful Use implementation and distinctions between Stage 1 and 2. We will also explore best practices, frequently asked questions, and any questions you may have.

10:00–11:00 a.m.

Wisconsin’s Global Approach to Addressing the Primary Care Workforce Shortage

WNA was part of an initiative that addressed the primary care workforce shortage in Wisconsin. The initiative consisted of a statewide summit with representatives from the physician, nursing, physician assistant, academic, community and health care settings. The summit addressed the issues of education, transforming practice, recruitment, barriers, and policy. The summit resulted in recommendations and the development of a white paper describing future needs and changes for the future. This session will provide a summary of the workforce strategies.

11:00 a.m.–12:00 p.m.

Legislative Update: APRN Title Protection, Licensure and Patient Compensation Fund Legislative Proposal

The APRN Coalition is working with legislators in sponsoring legislation that addresses title protection, licensure, and patient compensation fund changes to support APRN practice. This session will provide a summary and purpose of the legislation and strategies for legislator outreach.

Burton Wagner, BBA, JD, MAB - *Attorney, Reinhart Boerner Van Deuren, s.c.*

Gina Dennik-Champion, MSN, RN, MSHA - *Executive Director and Lobbyist, Wisconsin Nurses Association*

12:00–1:00 p.m.

Pre-Conference Registration

[View the Agenda](#) on the conference website for breakout session descriptions.

1:00–3:00 p.m.

PRE-CONFERENCE BREAKOUT SESSION 1

1A: An Introduction to Primary Wound Closure, Principles and Practice (Rx)

Jeff Kobernusz, MS, RN, APNP, ACNP-BC - *Hospitalist Acute Care Nurse Practitioner, Meriter Hospital, Meriter Medical Group, Division of Hospitalist Medicine*

(Registration will be limited to 25 participants.)

1B: Implementing the Centering Model for Evidence-based Group Care across the Life Span

Carrie Klima, CNM, PhD - *National Faculty/Consultant, Centering Healthcare Institute: Program Director, University of Illinois Chicago Nurse Midwifery and Women's Health NP Programs*

1C: Skills for Advanced Practice Nurses: IUD Insertion Workshop (Rx)

(This session is continued in 2C. Must attend both sessions to receive contact hours)

Ann Baggot, MSN, WHNP-BC, APNP - *Nurse Practitioner – Department of OB/GYN, UW Health/UW Medical Foundation*

Chin-Feng D Lai, MSN, FNP, APNP - *Nurse Practitioner, Ministry Medical Group-Stevens Point*

(Registration will be limited to 50 participants.)

1D: Basic Interpretation of the 12 Lead ECG

(This session is continued in 2D. Must attend both sessions to receive contact hours)

Betty Ross Aguilar, RN, MS, CEN - *Clinical Educator, Wheaton Franciscan Healthcare*

Maureen T. Greene, PhD, RN, APRN - *Nurse Research Coordinator, Critical Care CNS, ACNP, Wheaton Franciscan-St. Joseph*

1E: Bone Imaging: How to Order the Right Test Every Time

Andrew J. Ziegert, MD - *Diagnostic Radiologist, Radiology Associates of the Fox Valley, S.C.*

1F: From Campfire Conversation to Physician-Led Advance Care Planning Initiative: Grassroots Film Inspires Culture Change in Wisconsin

Michael Bernhagen, MA - *Co-Producer, "Consider the Conversation: A Documentary on a Taboo Subject," Burning Hay Wagon Productions*

(Registration will be limited to 30 participants.)

3:00–3:30 p.m.

Conference Registration/Refreshment Break

3:30–5:30 p.m.

PRE-CONFERENCE BREAKOUT SESSION 2

2A (repeat of 1A): An Introduction to Primary Wound Closure, Principles and Practice (Rx)

Tina Bettin, DNP, MSN, RN, FNP-BC, APNP - *President of WNA APRN Forum/Family Nurse Practitioner, Theda Care Physicians*

(Registration will be limited to 25 participants.)

2B: Diabetes Boot Camp: The Basics of Diabetes Management (Rx)

Trudy Mara, RN, MS, FNP-C, GNP-C, ADM-BC, CDE, APNP - *Nurse Practitioner, Baraboo Internal Medicine – Dean Health System*

Jean Roedel, APNP, FNP-BC, ADM-BC - *Family Nurse Practitioner - Advanced Diabetes Management, St. Croix Regional Medical Center*

JoEllen E. Frawley, RN, MSN, ANP, APNP, BC-ADM, CDE - *Nurse Practitioner, Diabetes Coordinator Inpatient/Outpatient, Sauk Prairie Memorial Hospital and Clinics*

(Registration will be limited to 45 participants.)

2C: (Continued from 1C. Must attend both sessions to receive contact hours)

2D: (Continued from 1D. Must attend both sessions to receive contact hours)

2E: Situational Awareness and Communication

Jeff Kobernusz, MS, RN, APNP, ACNP-BC - *Hospitalist Acute Care Nurse Practitioner, Meriter Hospital, Meriter Medical Group, Division of Hospitalist Medicine*

2F (repeat of 1F): From Campfire Conversation to Physician-Led Advance Care Planning Initiative: Grassroots Film Inspires Culture Change in Wisconsin

Michael Bernhagen, MA - *Co-Producer, "Consider the Conversation: A Documentary on a Taboo Subject," Burning Hay Wagon Productions*

(Registration will be limited to 30 participants.)

5:30–7:30 p.m.

27th Annual WNA APRN Forum Pharmacology & Clinical Update Networking Reception

All conference participants are welcome to attend the Networking Reception. Cost is included in your conference registration fee. Please indicate when registering if you plan to attend.

6:00 p.m.

NEXPLANON® TRAINING

A NEXPLANON® (etonogestrel implant) 68 mg Radiopaque Clinical Training Program will be offered on Thursday, May 2, at 6:00 p.m., as part of the 27th Annual WNA APRN Forum Pharmacology & Clinical Update at the Monona Terrace and Convention Center in Madison.

Dinner will be provided for those attending this training.

During the NEXPLANON® Clinical Training Program attendees will learn important clinical data about NEXPLANON® and patient counseling. This session includes a hands-on training for insertion and removal procedures as well as localization techniques. Completion of this course will allow the attendee to

order NEXPLANON® from an authorized distributor(s) and perform insertion and removal procedures.

This session, which is sponsored by Merck, is not accredited for continuing education credit. The training is open to advanced practice clinicians with furnishing numbers or prescribing privileges in their state and to physicians only. It is Merck's policy to verify all clinicians' practice, license, and eligibility information in advance of the training. Merck will contact the attendee directly if there is a problem regarding this process. Attendees are expected to be present for the entire training. Certificates of completion will not be issued to those who arrive late or leave early.

There is no charge to attend, but you must contact Kerry Berens at Merck by Friday, April 19 to register, (608) 354-6603 or kerry_berens@merck.com. The training can accommodate up to 20 participants.

There are no continuing education credits being offered for this training. This program is being sponsored by Merck with no endorsement or financial support from the Wisconsin Nurses Association.

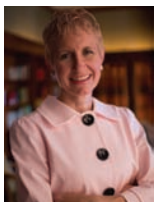
FRIDAY, MAY 3, 2013

7:00–8:30 a.m.

Registration/Continental Breakfast/Exhibits

8:45–9:00 a.m.

Welcome and Announcements, and process for obtaining CNE Credit



9:00–10:00 a.m.

KEYNOTE PRESENTATION

Why Media Portrayals of Nurses Put Us All at Risk and How We Can Change Them

Presenter: Sandy Summers, RN, MSN, MPH - Founder and Executive Director, *The Truth About Nursing*

The nursing shortage is a public health crisis that is one of the biggest dangers for patients and the public at large. Sandy Summers will expose some overlooked roots of the nursing crisis and its effects. By reconsidering how our society thinks and acts toward nursing, we can empower nurses to improve safety for patients, reduce turnover, and enhance public health.

The media commonly presents nurses as handmaidens, sex objects, angels, or battleaxes. Advanced practice nurses are often ignored, or portrayed as cut-rate physician substitutes, even though studies show their care is at least as good. Sandy Summers will explore strategies to help nurses reach out to the media, including through the Truth About Nursing web site and her book, *Saving Lives: Why the Media's Portrayal of Nurses Puts Us All at Risk*, in order to increase the value placed on nursing to make patients safer, and move the image of nursing toward that of a profession that's second to none.

10:00–10:45 a.m.

Exhibits/Refreshment Break

10:45 a.m.–12:00 p.m.

BREAKOUT SESSION 3

3A: Allergies, an Integrative Medicine Perspective (Rx)

Robert Fox, DOM, L.Ac, APNP - Owner/Health Director of *Shalem Healing Pediatrics, Women's Health, Family Practice*

3B: Staying Sexy In Our Sixties and Beyond (Rx)

Mary Ellen West, CNM, CSC - *Certified Nurse-Midwife; Certified Sex Counselor, Gundersen Lutheran Medical Center*

3C: GI Bleeding Update M2A – Great New Tools but Still Frustrating! (Rx)

Mark Reichelderfer, MD - *Professor of Medicine and Surgery, Division of Gastroenterology and Hepatology, UW School of Medicine and Public Health*

3D: Lawful Prescribing: Protecting Your Practice and Prevention of Diversion (Rx)

Marc Gonzalez, PharmD - *Director, Law Enforcement Liaison and Education, Corporate Security - Purdue Pharma L.P.*

3E: Why People Develop PTSD and What Treatments are Most Effective (Rx)

Mark D. Rusch, PhD - *Associate Professor – Psychology, Department of Plastic Surgery, Medical College of Wisconsin*

12:00–1:15 p.m.

Exhibits/Lunch – Scholarship Announcement and Presentation

During lunch, the Mary Barker APRN Forum Scholarship winners will be announced, and we welcome your participation in honoring these outstanding Advanced Practice Registered Nurses.

Tina Bettin, DNP, MSN, RN, FNP-BC, APNP - *President of WNA APRN Forum/Family Nurse Practitioner, Theda Care Physicians* will also present a "state of the state" on advanced practice nursing in Wisconsin. Don't miss this important information!

12:00–1:15 p.m.

WAPNAP Annual Business Meeting

Members of WAPNAP – the Wisconsin Chapter of the National Association of Pediatric Nurse Practitioners, are invited to attend the WAPNAP Annual Business Meeting and Lunch. During the meeting, the WAPNAP Strategic Plan will be reviewed and the Pediatric Nurse Practitioner of the Year will be announced. **Not sure if you're a member of WAPNAP?** Please contact Tammy Langhoff at tlanghoff@mcw.edu.

Lunch is included in your conference registration fee, but please indicate when registering which lunch you plan to attend.

1:15–2:30 p.m.

BREAKOUT SESSION 4

4A: Head Concussion Lessons Learned

Kevin R. Whitney, MD - *Head Concussion Physician Coordinator, Richland Medical Center*

4B: Mermaids in Menopause – Swimming with Sharks in Hot Waters (Rx)

Terri Michel, MS, APNP - *Women's Health Nurse Practitioner, University of Wisconsin Medical Foundation, Department of Obstetrics and Gynecology*

4C: Acute Care Shorts (Rx)

Insulin Pumps in the Hospital

Melanie Witte, MS, RN, BC-ADM, APRN-BC - *Nurse Practitioner, University of Wisconsin Medical Foundation*

Update on the Management of COPD in the Primary Care Setting

Jodi L. Wiebelhaus, DNP, FNP-BC, APNP - *Doctor of Nursing Practice, ProHealth Care*

4D: Diagnosing Dementia in Primary Care Practice (Rx)

Mark A. Sager, MD - Professor of Medicine, University of Wisconsin School of Medicine and Public Health; Director of Wisconsin Alzheimers Institute

Bruce Hermann, PhD - Director of Matthews Neuropsychology Laboratory, University of Wisconsin School of Medicine and Public Health

4E: Treating Perinatal and Postpartum Depression (Rx)

Celeste Jackson, APNP - Adult Psychiatric Nurse Practitioner, Marshfield Clinic

2:30–2:45 p.m.

Refreshment Break

2:45–4:00 p.m.

BREAKOUT SESSION 5

5A: Care of the Child with Leg Pain (Rx)

Allison Duey-Holtz, RN, MSN, CPNP-PC - Pediatric Nurse Practitioner - CHW Department of Pediatric Orthopaedics, Medical College of Wisconsin

5B: "Put a Cork in It!" – A Multidisciplinary Team Approach to Treating Urinary Incontinence and Pelvic Floor Disorders (Rx)

(This session is continued in 6B. Must attend both sessions to receive contact hours)

Debra L. Ketterhagen, CNM, MSN, APNP - Advanced Practice Nurse, ProHealth Care, Inc.

Katherine R. Stevenson, MD, FACOG - Medical Director, Urogynecology Services at Waukesha Memorial Hospital, ProHealth Care

Kristine Zinkgraf, ACNS-BC, APNP - Advanced Practice Nurse, ProHealth Care – Waukesha

Beth Bartelsen, PT - Physical Therapist, ProHealth Care Inc.

5C: Oncologic Emergencies (Rx)

Nikki Campagna, DNP-BC, AOCNP - Nurse Practitioner, Cancer Treatment Centers of America – Midwestern

Jamie Cairo, DNP, APRN-BC, AOCNP - Nurse Practitioner and Cancer Integration Manager, Aurora Cancer Care

5D: Symptom Management in the Palliative Care Patient (Rx)

Sarah J. Nickoloff, MD - Assistant Professor in the Department of Medicine at Medical College of Wisconsin; Staff Physician in the Division of Medicine, Zablocki VA Hospital

5E: To Prescribe or Not to Prescribe: Management of Depression and Anxiety in Primary Care (Rx)

Jennifer Fiegel-Newlon, FNP, PMHNP, APNP, DNP - Psychiatric Mental Health Nurse Practitioner, St. Joseph's Healthcare – Gundersen Lutheran

4:00–4:15 p.m.

Break

4:15–5:30 p.m.

BREAKOUT SESSION 6

6A: Differential Diagnosis and Treatment of ADHD in the Primary Care Setting (Rx)

Jocelyn R. Miller, PhD - Clinical Child Psychologist, Pauquette Center for Psychological Services

6B: (Continued from 5B. Must attend both sessions to receive contact hours)

6C: Alcohol and Hepatitis C – The Dynamic Duo (Rx)

John P. Rice, MD - Assistant Professor of Medicine, University of Wisconsin School of Medicine and Public Health

6D: Updates in Hepatitis C Treatment: Protease and Polymerase Inhibitors (Rx)

Lisa Cervantes, PA-C, MPAS - Physician Assistant, UW Health, Division of Gastroenterology and Hepatology

6E: Augmentation Strategies in Primary Care for Treatment Resistant Psychiatric Disorders (Rx)

Michael S. Field, RN, MSN, APNP - Advanced Practice Psychiatric Nurse, Marshfield Clinic



FRIDAY EVENING

The WNA APRN Forum brings you a performance by the *Laryngospasms* on Friday evening, May 3 - a special group of CRNAs who have been singing for over two decades. Tunes like "Wakin' Up Is Hard to Do," "C.R.N.A.," and "Scopin' USA" will sound very familiar, and are sure to entertain!

After a long day of educational sessions, make plans to attend this fun and relaxing evening with your colleagues. Fee to attend is \$25.00, which includes a buffet dinner at 5:45 p.m. and the performance at 7:00 p.m. (approximately an hour). Dress is casual. Please indicate when registering if you plan to attend.

Bidding on the WNA APRN Forum Silent Auction items will close at the end of the *Laryngospasms'* performance, so be sure to be there to make your final bids!

SATURDAY, MAY 4, 2013

7:00–8:30 a.m.

Conference Registration



7:00–8:20 a.m.

Schools of Nursing Networking Breakfast

Network with colleagues over coffee, and meet and greet your fellow alumni at the Schools of Nursing Networking Breakfast! Continental breakfast will be served (included in your conference registration fee).

8:30–9:45 a.m.

BREAKOUT SESSION 7

7A: Pediatric Shorts: Pertussis and Respiratory Syncytial Virus (RSV) (Rx)

Kansas DuBray, MD - Director of Hospital Medicine, St. Clare Hospital

7B: OB/GYN for the Urgent Care Provider (Rx)

Laura Kwitek, BSN, MSN, APNP, WHNP-BC - OB/GYN Nurse Practitioner, UW-Health Fitchburg

Bonnie Sommers-Olson, MSN, NP - Nurse Practitioner, University of Wisconsin Medical Foundation

7C: Atrial Fibrillation and Reducing Stroke Risk (Rx)

Annette Prihoda, RN-BC, MSN-BC, APNP - Nurse Practitioner in Electrophysiology, Aurora



7D: Hypertension – Where are the Guidelines Going? (Rx)

Patrick McBride, MD, MPH - *Professor of Medicine and Family Medicine, Preventive Cardiology Associate Director, Associate Dean for Students - UW School of Medicine and Public Health*

7E: Delirium: Disease Burden, Causes and Treatment (Rx)

Justin Knapp, MD – *Psychiatrist, Marshfield Clinic*

9:45–10:00 a.m.

Refreshment Break

10:00–11:15 a.m.

BREAKOUT SESSION 8

8A: Immunizations in Childhood and Adolescence (Rx)

Jonathan L. Temte, MD, PhD - *Chair, US Advisory Committee on Immunization Practices; Chair, Wisconsin Council on Immunization Practices; Professor of Family Medicine, University of Wisconsin School of Medicine and Public Health*

8B: Art and Science of Managing Contraception (Rx)

Kate O’Keefe, FNP-BC - *Nurse Practitioner, Planned Parenthood of Wisconsin*

8C: HIV: Clues to Aid in Initial Diagnosis and Evaluation (Rx)

Neena Thomas-Gosain, MD, MHS - *Clinical Assistant Professor, Division of Infectious Diseases, University of Wisconsin-Madison*

8D: Pre-Diabetes: Practice Pearls from a Multi-Disciplinary Perspective (Rx)

Carol Sargent, MS, RD, CD, CDE - *Clinical Nutritionist, Certified Diabetes Educator, University of Wisconsin Hospital and Clinics*

Melanie Witte, MS, RN, BC-ADM, APRN-BC - *Nurse Practitioner - University of Wisconsin Medical Foundation*

Laura Pady-Porter, MS, ACSM - *Clinical Exercise Physiologist, University of Wisconsin Hospital and Clinics*

Heidi Beckman, PhD - *Senior Clinical Health Psychologist, University of Wisconsin Hospital and Clinics*

8E: ADHD in Adolescents and Adults: Best Practices for Primary Care and Mental Health Providers (Rx)

Eric Heiligenstein, MD - *Director of Psychiatry, University Health Services, University of Wisconsin-Madison*

11:15–11:30 a.m.

Break

11:30 a.m.–12:45 p.m.

BREAKOUT SESSION 9

9A: Care and Treatment for Children, Youth, and Women with HIV: From the Clinic to Home (Rx)

Barbara Cuene, RN, MSN - *Clinical Nurse Specialist/Program Coordinator, Children’s Hospital of Wisconsin*

9B: Midlife Sleep (Rx)

David T. Plante, MD - *Assistant Professor of Psychiatry & Associate Sleep Medicine Fellowship Director, University of Wisconsin School of Medicine and Public Health*

9C: Palliative Care & Illness Trajectories in Advanced Cardiac Disease (Rx)

Patrick Hughes, MD, FACC - *Assistant Professor of Medicine, Division of Cardiovascular Medicine, University of Wisconsin School of Medicine and Public Health*

9D: Clostridium difficile infection (CDI): Updates in Current Practice (Rx)

Gerard Gawrys, PharmD, BCPS - *Infectious Diseases Pharmacy Resident, Milwaukee VA Medical Center – United States Department of Veterans Affairs*

9E: “What’s Up Wisconsin?” How Wisconsinites are Getting High: Panel Discussion with Law Enforcement and Providers about Substances of Abuse (Rx)

Gina Bryan, DNP, PMHCNS-BC, APRN - *Advanced Practice Registered Nurse, Journey Mental Health Center; Clinical Assistant Professor University of Wisconsin-Madison SON*

Carol Ann Kashishian - *Detective, Dane County Narcotics and Gang Task Force*

Gary Schneck - *Lt., Special Investigations Unit, Marathon County Sheriff’s Department*

Kathy L. Federico - *Group Supervisor - Diversion Control Group, Drug Enforcement Administration*

Debra Day, RN, MS, APNP - *Advanced Practice Psychiatric Nurse Prescriber, La Crosse County Mental Health Recovery Services Outpatient Clinic; Veterans Administration La Crosse Community Based Outpatient Clinic*

12:45 p.m.

Conference Closes

Box lunches will be available for participants to take or eat on site (included in your conference registration fee).



REGISTRATION INFORMATION

Registration Deadline: Monday, April 22, 2013

REGISTRATION FEES: Registration fee includes conference materials, meals, and breaks on the day(s) you're attending. Handouts received will be available online in electronic format only.

- There is no additional fee to attend the Networking Reception on Thursday evening or the Schools of Nursing Networking Breakfast on Saturday, but please indicate when registering if you plan to attend.
- There is no additional fee for lunch on Friday, but please indicate when registering which lunch you plan to attend (see page 6).
- There is an additional charge of \$25.00 to attend the Friday evening buffet dinner, silent auction, and performance by the *Laryngospasms*. Please indicate when registering if you plan to attend and the fee will be added to your registration cost.

	WNA Member	WAPNAP Member	Non-Member	Student* WNA Member	Student* Non-WNA Member
Pre-Conference Thursday A.M.	\$40	\$50	\$70	\$30	\$40
Pre-Conference Thursday P.M.	\$150	\$180	\$200	\$105	\$110
Two Days Friday and Saturday	\$275	\$305	\$350	\$230	\$240
Friday Only	\$190	\$205	\$250	\$155	\$165
Saturday Only	\$160	\$175	\$200	\$130	\$140

* Nurses enrolled for the first time in an APRN program.

HOW TO REGISTER: Registration must be completed [ONLINE](#). Payment by credit card at time of registration is preferred. Registration paid by other methods i.e., check, P.O., will not be processed until payment is received. Enrollment-limited afternoon sessions of the Pre-Conference will be filled on a first-come, first served basis. Please contact the WNA office with questions.

CONFIRMATIONS: A confirmation page will be generated immediately upon submission of the online registration with credit card payment. **Please print the confirmation page for your records.** Confirmations for registration with later payment will be sent if payment is received by April 22, 2013.

CANCELLATIONS: A \$25.00 processing fee will be charged for cancellations prior to the conference. There will be NO REFUNDS after the conference begins or for "no shows."

Not a Member of WNA and Interested in Joining? If a non-WNA member joins WNA at the time of registration, he/she is eligible to register at WNA member rates. Visit the WNA website at www.wisconsinnurses.org or contact Joe, WNA Member Services Director, to join (800-362-3959, ext. 11 or joe@wisconsinnurses.org).

SPECIAL MENU/SERVICES: Please note any dietary restrictions when registering. In conjunction with the facility, WNA will make every effort to accommodate special dietary needs brought to our attention **prior** to the conference.

In accordance with the Americans with Disabilities Act, please advise WNA when registering if you have any disability that requires special materials and/or services so that appropriate personnel are advised.

QUESTIONS? Please contact Brenda, WNA Conference Registration Coordinator, at 800-362-3959, ext. 12 or Brenda@wisconsinnurses.org.

